

See discussions, stats, and author profiles for this publication at: <https://www.researchgate.net/publication/253338806>

# The Pharmacokinetics of Recombinant Human Erythropoietin in Balkan Endemic Nephropathy Patients

Article in *Nefrologia: publicacion oficial de la Sociedad Espanola Nefrologia* · July 2013

DOI: 10.3265/Nefrologia.pre2013.Apr.11800 · Source: PubMed

CITATIONS

0

READS

69

8 authors, including:



**Nenad Petković**

Fresenius Medical Care

10 PUBLICATIONS 13 CITATIONS

SEE PROFILE



**Branislava Miljkovic**

University of Belgrade

138 PUBLICATIONS 486 CITATIONS

SEE PROFILE



**Katarina Vucicevic**

University of Belgrade

55 PUBLICATIONS 201 CITATIONS

SEE PROFILE



**Sanja Simic Ogrizovic**

University of Belgrade

76 PUBLICATIONS 428 CITATIONS

SEE PROFILE

Some of the authors of this publication are also working on these related projects:



Balkan nephropathy [View project](#)



Kidney transplantation [View project](#)

# The Pharmacokinetics of Recombinant Human Erythropoietin in Balkan Endemic Nephropathy Patients

Višnja Ležaić<sup>1,2</sup>, Nenad Petković<sup>3</sup>, Ivko Marić<sup>4</sup>, Branislava Miljković<sup>5</sup>, Katarina Vučićević<sup>5</sup>, Sanja Simić-Ogrizović<sup>1,2</sup>, Vesna Pejović<sup>3</sup>, Ljubica Djukanović<sup>1</sup>

<sup>1</sup> University of Belgrade, Medical Faculty (Serbia)

<sup>2</sup> Clinical Centre of Serbia, Department of Nephrology (Serbia)

<sup>3</sup> FMC Center, Šamac, (Bosnia and Herzegovina)

<sup>4</sup> Special Hospital for Endemic Nephropathy, Lazarevac (Serbia)

<sup>5</sup> Department of Pharmacokinetics and Clinical Pharmacy, Faculty of Pharmacy, University of Belgrade (Serbia)

Nefrologia 2011;33(4):478-85

doi:10.3265/Nefrologia.pre2013.Apr.11800

## ABSTRACT

**Background:** Balkan endemic nephropathy (BEN) hemodialysis patients require a higher dose of recombinant human erythropoietin for maintaining target hemoglobin level than patients with other kidney diseases.

**Objectives:** Comparison of the pharmacokinetics of beta-erythropoietin given subcutaneously to hemodialysis patients with BEN or other kidney diseases (non-BEN).

**Methods:** Recombinant human erythropoietin (75U/kg) was administered subcutaneously to 10 BEN and 14 non-BEN hemodialysis patients. The predose plasma level of erythropoietin (Epo) was subtracted from all postdose levels. The relevant pharmacokinetic parameters were calculated after noncompartmental pharmacokinetic analysis using Kinetica software (Thermo Scientific, ver.5.0). **Results:** Although basal plasma Epo concentration was similar in BEN ( $20.1 \pm 10.3$  U/L) and non-BEN ( $15.1 \pm 8.1$  U/L;  $p = .1964$ ) patients, there were significant differences between the groups for elimination rate constant ( $0.016 \pm 0.006$  vs  $0.026 \pm 0.011$  hr<sup>-1</sup>;  $p = .020$ ) and elimination half-life ( $50.24 \pm 19.12$  vs  $33.79 \pm 18.91$  hr,  $p = .048$ ). These differences remained significant after adjustment for patient characteristics (age, sex,

hemodialysis duration, ferritin, PTH and ACEI use). No significant differences between groups were found in maximal Epo concentration, time to maximum Epo concentration, area under the curve from time of dosing extrapolated to infinity, clearance, mean residence time of Epo between groups both before and after adjustment. **Conclusion:** Pharmacokinetic analysis of beta-erythropoietin detected a significantly longer elimination half-life in BEN than in non BEN patients. This finding needs to be confirmed in a well-controlled study with a larger sample size.

**Keywords:** Balkan endemic nephropathy. Human recombinant erythropoietin. Pharmacokinetics.

*La farmacocinética de la eritropoyetina recombinante humana en pacientes con nefropatía endémica de los Balcanes*

## RESUMEN

**Antecedentes:** Los pacientes con nefropatía endémica de los Balcanes (NEB) en hemodiálisis necesitan una dosis más elevada de eritropoyetina recombinante humana que los pacientes con otras enfermedades renales para poder mantener el nivel de hemoglobina deseado. **Objetivos:** Comparar la farmacocinética de la eritropoyetina beta administrada subcutáneamente a pacientes

**Correspondencia:** Višnja Ležaić

University of Belgrade, Medical Faculty (Serbia).

Clinical Centre of Serbia, Department of Nephrology (Serbia)

Pasterova 2. 11000. Belgrade, Serbia.

visnjalezaic@gmail.com

ljubicadjukanovic@yahoo.com

en hemodiálisis con NEB u otras enfermedades renales. **Métodos:** A 10 pacientes hemodializados con NEB y 14 pacientes hemodializados con otras enfermedades renales se les administró subcutáneamente eritropoyetina (EPO) recombinante humana (75 UI/kg). El nivel de EPO en plasma previo a la dosis se sustrajo de todos los niveles que se obtuvieron tras administrarla. Los parámetros farmacocinéticos relevantes se calcularon tras el análisis farmacocinético no compartimental con ayuda de la aplicación Kinetica (Thermo Scientific, versión 5.0). **Resultados:** Aunque la concentración basal de EPO en el plasma era similar en pacientes con NEB ( $20,1 \pm 10,3$  UI/l) y en pacientes con otras enfermedades renales ( $15,1 \pm 8,1$  UI/l;  $p = 0,1964$ ), se apreciaron diferencias significativas entre los grupos con respecto a la constante de eliminación ( $0,016 \pm 0,006$  vs.  $0,026 \pm 0,011$  h<sup>-1</sup>;  $p = 0,020$ ) y a la semivida de eliminación ( $50,24 \pm 19,12$  vs.  $33,79 \pm 18,91$  h,  $p = 0,048$ ). Estas diferencias resultaron igualmente significativas tras ajustar los valores en función de las características de los pacientes (edad, sexo, duración de la hemodiálisis, ferritina, hormona paratiroidea y uso de inhibidores de la enzima de conversión de la angiotensina). No obstante, no se observaron diferencias significativas entre los grupos en los siguientes parámetros ni antes ni después de efectuar los ajustes pertinentes: concentración máxima de EPO, tiempo en alcanzar la concentración máxima de EPO, área bajo la curva extrapolada al infinito a partir de la administración de la dosis, aclaramiento y tiempo medio de permanencia de la EPO. **Conclusión:** El análisis farmacocinético de la eritropoyetina beta reveló que la semivida de eliminación era significativamente más larga en los pacientes con NEB, hallazgo que debe ser confirmado en un estudio bien controlado con una muestra más grande.

**Palabras clave:** Nefropatía endémica de los Balcanes. Eritropoyetina recombinante humana. Farmacocinética.

## INTRODUCTION

Anemia was described as a characteristic of Balkan endemic nephropathy (BEN) in early reports on the disease,<sup>1,2</sup> so Danilovic<sup>3</sup> included it among the criteria for diagnosis. However, several authors reported no significant differences between anemia in BEN and other kidney diseases.<sup>4-6</sup> Thus, although anemia in BEN patients deteriorates with progressive renal failure similarly as in patients with other kidney diseases, it was more severe in BEN patients on hemodialysis than in those with other kidney diseases.<sup>6,7</sup>

We recently showed that BEN hemodialysis patients required a higher dose of recombinant human erythropoietin for maintaining the target hemoglobin level than patients with

other kidney diseases.<sup>8</sup> Several factors may contribute to the weaker hematopoietic response to erythropoietin-stimulating agents (ESA). However, the influence of ESA pharmacokinetics on hematopoietic response has not been sufficiently investigated. Pharmacokinetics studies were mostly devoted to the pharmacokinetics of diverse ESA administered by different routes,<sup>9-13</sup> as well as to the pharmacokinetics of ESA in various groups of chronic kidney disease patients and healthy persons.<sup>14-16</sup>

The aim of this study was to compare the pharmacokinetics of beta-erythropoietin (beta-Epo) given subcutaneously to BEN patients and patients with other kidney diseases (non-BEN) and to evaluate the factors influencing beta-Epo kinetics.

## METHODS

### Study design and patients

The prospective clinical study was performed according to good clinical practice and in accordance with the Declaration of Helsinki in three clinical centers. The Ethics Committee of the Clinical Center of Serbia evaluated and approved the study and the participants gave informed consent.

A total of 24 subjects was selected from the population of 256 hemodialysis patients according to the following inclusion criteria: stable individuals on regular hemodialysis, treated with beta-Epo for at least 1 year. Exclusion criteria were: treatment with ESA other than beta-Epo; anemia from causes other than chronic kidney disease - blood loss, malignancy, acute infection, hemolysis, major surgery; liver disease (twice or half normal values for transaminases); blood transfusion within one month before enrolment; severe psychiatric dysfunction or other limitations preventing the patient to give consent. Among the remaining 96 patients (40 BEN and 56 others) who met inclusion criteria, 10 with BEN and 14 with other kidney diseases were selected using *systematic sampling* i.e every 10<sup>th</sup> patient from each group was assigned for study. The group with other kidney diseases consisted of 8 patients with glomerulonephritis, 3 with hypertensive nephropathy, 2 with reflux nephropathy and 1 with polycystic kidney disease.

All patients were treated thrice weekly for 4-5 h by standard bicarbonate hemodialysis using polysulphone membrane dialyzers. Data on patients' weight, blood pressure, use of angiotensin converter enzyme inhibitors (ACEI) and angiotensin II receptor antagonists (ARA II), hemoglobin, rHuEpo dose and iron treatment were obtained from medical records. Serum levels of iron,

ferritin, transferrin saturation, C-reactive protein (CRP), albumin, urea, creatinine, calcium, phosphate and parathyroid hormone (PTH) were determined in each patient at the time of study.

### Beta-erythropoietin administration and blood sampling

All patients had been treated with beta-Epo (Epoetin-beta, Recormon®, Roche) for more than 6 months and during the study received beta-Epo twice weekly, at the end of the first and third hemodialysis in the week. The dose of beta-Epo was adjusted to attain the hemoglobin target range defined by European best practice guidelines for the management of anemia in patients with chronic renal failure<sup>17</sup>. In addition, iron status was assessed and supplementary iron given according to the same guidelines.

The last beta-Epo dose prior to pharmacokinetics blood sampling was omitted in all patients but recontinued at the first hemodialysis session after the study with the dose used before. For pharmacokinetic assessment 75U/kg of beta-Epo was administered subcutaneously at the end of the first hemodialysis in the week. Venous blood was collected into heparinized tubes before and at 2, 6, 8, 12, 24, 48, and 72 (only in five patients) h after beta-Epo administration. Blood samples were centrifuged for 10 min and plasma stored frozen until analysis. Erythropoietin (Epo) concentration was determined in all samples on the same day by chemiluminescent immunoassay for erythropoietin on an Immulite 2000 analyzer (Siemens Healthcare Diagnostics).

### Pharmacokinetics

For pharmacokinetic analysis the predose plasma level of Epo was subtracted from all postdose levels of Epo for each patient. Noncompartmental pharmacokinetic analysis using Kinetica software (Thermo Scientific, ver. 5.0) was performed in order to calculate following pharmacokinetic parameters: terminal elimination rate constant ( $\beta$ ), half-life of elimination ( $t_{1/2}$ ), maximum concentration ( $C_{max}$ ), time of reaching  $C_{max}$  ( $t_{max}$ ), area under the curve from time of dosing extrapolated to infinity (AUC), apparent volume of distribution (Vd/F), apparent clearance (CL/F), mean residence time (MRT).

### Statistical analysis

The results were expressed as mean values with standard deviations. The significance of differences between mean values for groups was calculated using the Mann-Whitney U test and Student's t-test. One-way ANOVA was used to compare pharmacodynamics parameters between the

groups (BEN and non-BEN). Analysis of covariance (ANCOVA) was used to adjust these differences for patient characteristics that differed between groups: age, sex, hemodialysis duration, ferritin, PTH as well as ACEI use. All analyses were performed using the SPSS (ver. 20) program.

### RESULTS

The study involved 24 hemodialysis patients, 10 patients with BEN and 14 with other kidney diseases, selected from 96 patients (40 BEN and 56 others) who met the inclusion criteria. Their main characteristics are presented in Table 1. Patients with BEN were significantly older and had spent less time on hemodialysis than non-BEN patients. No between group differences were found for gender, mean weight, Kt/V and the proportion of subjects using ACEI. None of the participants used ARA II.

Results of laboratory analyses in the examined individuals are given in Table 2. Mean hemoglobin level for the BEN group was  $112 \pm 5.5$  g/L and for the non-BEN group  $109 \pm 4.4$  g/L, and mean beta-Epo doses were  $87 \pm 16.5$  and  $66.5 \pm 28.3$  U/kg/week ( $p = .051$ ), respectively. Iron reserves were significantly higher in the BEN than in the non-BEN group. Predialysis serum creatinine and PTH concentrations were significantly lower, and serum calcium concentration was significantly higher in the BEN than in the non-BEN group. Basal plasma Epo concentration in BEN patients ranged between 7.2 and 40.1 U/L and in non-BEN patients between 6.7 and 31.2 U/L, but the difference between the two groups for mean concentration was not statistically significant ( $20.1 \pm 10.3$  U/L; vs.  $15.1 \pm 8.1$  U/L;  $p = .1964$ ).

The individual profiles of Epo concentration after subcutaneous administration of 75U/kg of beta-Epo are presented in Figures 1 and 2. After beta-Epo administration plasma Epo slowly increased and  $C_{max}$  was achieved after  $10.6 \pm 2.2$  h in BEN patients, and after  $14.6 \pm 6.16$  h in non-BEN patients ( $p = .697$ ). The presented profiles show greater inter-individual variability in Epo concentration but a faster decrease of Epo level during the elimination phase in non-BEN than in BEN patients.

The pharmacokinetic parameters of Epo are presented in Table 3. BEN patients differed markedly from non-BEN patients only in  $\beta$  ( $0.016 \pm 0.006$  vs.  $0.026 \pm 0.011$  L/h;  $p = .021$ ) and  $t_{1/2}$  ( $50.24 \pm 19.12$  vs.  $33.79 \pm 18.91$  h,  $p = 0.048$ ). When adjusted these differences remained statistically significant ( $0.017 \pm 0.011$  vs.  $0.026 \pm 0.009$ ;  $p = .038$  and  $57.10 \pm 24.54$  vs.  $33.32 \pm 9.12$ ;  $p = .032$  respectively). Also, the difference in other pharmacokinetic parameters presented in table 3 remained insignificant after adjustment.

**Table 1.** Main characteristics of the patients

	<b>BEN 10 patients</b>	<b>Non-BEN 14 patients</b>
Gender: male, number	6	7
Age, years	70.9 ± 7.1	49.6±14.4 <sup>a</sup>
Weight, kg	70.4±12.3	66.4±13.1
Dialysis duration, months	43.9 ± 34.7	106.6±59.4 <sup>a</sup>
Virus hepatitis positive, number	0	
KtV	1.45±0.23	1.61±0.25
ACEI use, yes/no	6/4	5/9
Iron supplementation, yes/no	6/4	11/3
Beta-Epo dose, U/kg/week	87.0±16.48	66.5±28.28

ACEI: angiotensin converter enzyme inhibitors.

<sup>a</sup> p<.05 for statistical significance between groups.

## DISCUSSION

In the present study beta-Epo pharmacokinetics was examined in BEN and non-BEN patients. After subcutaneous administration of 75U/kg of beta-Epo, plasma Epo concentration profiles showed smaller inter-individual variability in BEN than in non-BEN patients. The value of  $t_{1/2}$  was significantly greater in BEN than in non-BEN patients, but the difference in  $C_{max}$  and  $t_{max}$  was not detected under this study design.

A number of pharmacokinetic studies of ESA have been published, but comparison between them is difficult due to numerous methodological differences. Recent studies were largely devoted to the pharmacokinetics of new ESAs<sup>10,12,14</sup> and were usually carried out in healthy persons. The present

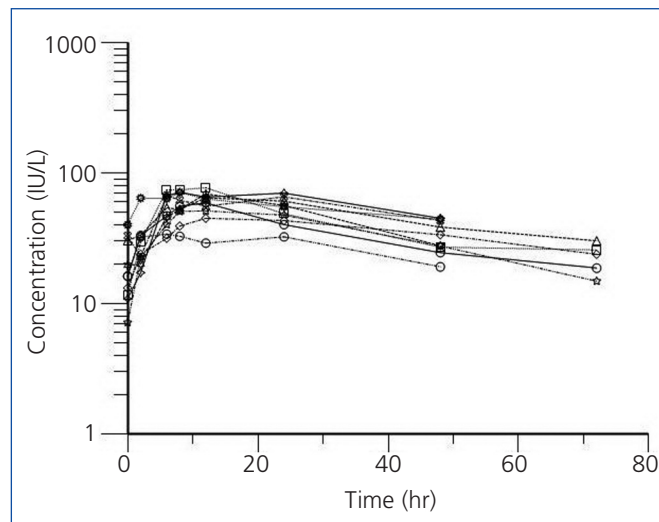
study was initiated from earlier data involving 146 BEN and 94 non-BEN patients, which showed that significantly higher beta-Epo doses for reaching and maintaining target hemoglobin level were necessary in BEN than in non-BEN patients.<sup>8</sup> In the present study the difference in the mean beta-Epo dose between the two groups examined did not reach statistical significance, probably due to the small number of patients involved. A number of factors may contribute to insufficient hematopoietic response to ESAs: iron deficiency most often caused by blood loss, secondary hyperparathyroidism, hemolysis, malignancy, malnutrition, inadequate dialysis, older age, inflammation.<sup>18,19</sup> Most of these factors were exclusion criteria for this as well as for our previous study. In addition, none of the mentioned factors for Epo hyporesponsiveness were significantly more pronounced in BEN than in non-BEN patients, except for

**Table 2.** Results of laboratory analyses in examined patients

	<b>BEN patients</b>	<b>Non-BEN patients</b>
Hemoglobin, g/L	112.2±5.50	108.9±4.37
Iron, µmol/L	14.3±7.0	13.3±2.9
Transferrin saturation, %	34.5±21.7	34.31±19.7
Ferritin, µg/L	1161.43±882.31	572.42±347.16 <sup>a</sup>
CRP, mg/L	8.66±6.64	6.83±3.17
Albumin, g/L	38.58±2.36	40.46±3.22
Serum urea, mmol/L	22.34±4.9	21.42±3.5
Serum creatinine, µmol/L	763.2±129.2	956.85±190.3 <sup>a</sup>
Serum calcium, mmol/L	2.49±0.29	2.22±0.14 <sup>a</sup>
Serum phosphate, mmol/L	1.43±0.37	1.63±0.49
PTH, pg/ml	94.6±87.4	401.5±390.9 <sup>a</sup>
Epo, U/L	20.1±10.3IU/L	15.1±8.1IU/L

CRP: C reactive protein; Epo: baseline erythropoietin plasma level; PTH: parathyroid hormone.

<sup>a</sup> p<.05 for statistical significance between groups.

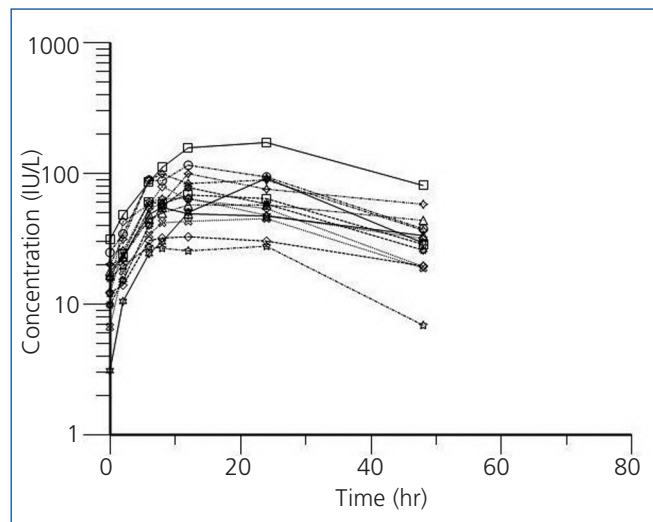


**Figure 1.** Plasma erythropoietin concentration profiles in BEN patients after subcutaneous administration of 75 U/kg of beta-erythropoietin.

older age. Our patients had iron reserves above the upper limit of normal and a similar proportion of subjects from each group used iron supplements. Elevated CRP<sup>20,21</sup> and PTH<sup>21</sup> were found to be associated with delayed or diminished response to ESA treatment. Our groups had similar CRP levels but PTH level was significantly lower in BEN patients than in the others. ACEI and ARA II can increase the need for ESA<sup>18,22</sup> but no significant difference was found between BEN and non-BEN patients in the relative number using ACEI (none of them used ARA II). The question arose whether the difference in beta-Epo dose could be caused by different pharmacokinetics of Epo in BEN and non-BEN patients.

After subcutaneous administration of beta-Epo the mean  $C_{max}$  of Epo in the two groups receiving the same dose did not differ significantly, but inter-individual differences in this concentration were higher in non-BEN (coefficient of variation, CV=48.4%) than in BEN patients (CV=22.4%). Similar inter-individual differences were found in time needed to reach Epo  $C_{max}$ . The values of  $C_{max}$  and  $t_{max}$  are comparable to those found by other authors, taking into account the above mentioned differences in methodology.<sup>11,16,23,24</sup> Higher inter-individual variability in non-BEN compared to BEN patients might be due to differences in group composition: the BEN group was more homogenous, consisting of patients with a single disease, while the non-BEN group included patients with diverse kidney diseases.

On the other hand, elimination of Epo was slower in BEN than in non-BEN patients. The value of  $t_{1/2}$  obtained in non-BEN patients was comparable to that found elsewhere for hemodialysis patients<sup>11</sup> and healthy individuals.<sup>25</sup> This indicates that BEN patients were characterized by slower



**Figure 2.** Plasma erythropoietin concentration profiles in non-BEN patients after subcutaneous administration of 75U/kg of beta-erythropoietin.

Epo elimination, and therefore with prolonged MRT as well. MRT above 60 hr had 7/10 BEN patients, but 4/14 non-BEN. Vd as primary pharmacokinetic parameter, for conventional drugs, affects the value of  $t_{1/2}$  in a proportional manner and not vice versa. Our results suggest that BEN patients have tendency of higher Vd values, and significantly higher  $t_{1/2}$  (Table 3). However, for protein and peptide drugs, dependency on active tissue uptake, binding to intra- and extravascular proteins can substantially increase the value of Vd. Therefore, not only the distribution by itself, but also the process of elimination and interaction directly with the Epo receptor on the red blood cell surface play an important role in increasing the values of Vd for Epo in comparison to its physiological distribution limited to extravascular space in the body.

Despite long clinical experience with ESAs, the mechanisms involved in their elimination have not been fully elucidated. It seems most likely that both native Epo and recombinant drugs are degraded following receptor-mediated uptake, mainly in the bone marrow.<sup>26-29</sup> It might be speculated that slower elimination and greater Vd/F of Epo in BEN patients originated either from lower affinity and slower binding of Epo to its receptors or reduced internalization and/or degradation rate. In addition, recently described mechanisms independent of the Epo receptor elimination pathway,<sup>29</sup> may also contribute to slower Epo elimination in BEN patients.

The main limitation of our study was the small number of patients in each group, and they were not matched in age. BEN is a slow progressive chronic kidney disease and patients who progress to end-stage renal disease usually start hemodialysis in the seventh decade of life.<sup>30</sup> Previous studies of Epo pharmacokinetics identified age and body weight as covariates influencing absorption and elimination of Epo.<sup>31-33</sup> In a study of beta-Epo pharmacokinetics in

**Table 3.** Individual and mean ( $\pm$  SD) values of pharmacokinetic parameters of rHuEpo after subcutaneous administration of 75 U/kg to examined patients

Group - patient	$\beta$ , hr <sup>-1</sup>	$t_{1/2}$ hr	Cmax, IU/L	AUC, hr*IU/L	Vd/F, L/kg	CL/F, L/hr/kg	MRT, hr	
BEN-1	0.022	31.48	34.00	2225.41	107.14	2.36	49.61	
BEN-2	0.008	86.64	67.30	8035.46	73.50	0.59	123.91	
BEN-3	0.010	70.46	71.10	7160.70	88.38	0.87	102.10	
BEN-4	0.026	26.59	69.30	3340.09	69.78	1.82	42.20	
BEN-5	0.012	59.83	71.30	6690.02	87.09	1.01	87.79	
BEN-6	0.024	28.64	51.20	3068.93	72.72	1.76	46.23	
BEN-7	0.012	55.81	45.00	4442.88	66.60	0.83	84.67	
BEN-8	0.013	52.05	77.20	4926.45	79.45	1.06	74.89	
BEN-9	0.015	47.43	64.60	5416.75	53.54	0.78	73.04	
BEN-10	0.016	43.47	59.00	3604.71	91.34	1.46	63.19	
NonBEN-1	0.025	27.83	99.40	4880.28	30.23	0.75	41.45	
NonBEN-2	0.019	35.71	64.90	3863.33	71.01	1.38	54.62	
NonBEN-3	0.015	46.61	32.80	2605.31	112.27	1.67	69.42	
NonBEN-4	0.033	21.97	172.90	8685.79	21.89	0.69	39.83	
NonBEN-5	0.008	80.01	57.60	7819.73	95.69	0.77	126.74	
NonBEN-6	0.032	21.53	115.90	4906.05	27.35	0.88	34.66	
NonBEN-7	0.025	27.93	45.20	2435.15	75.08	1.86	42.51	
NonBEN-8	0.031	22.23	78.30	3163.75	55.50	1.73	36.77	
NonBEN-9	0.048	14.57	92.10	3229.53	33.19	1.58	32.64	
NonBEN-10	0.014	47.99	99.90	7318.53	50.02	0.72	75.26	
NonBEN-11	0.040	17.52	27.80	1199.57	58.48	2.31	27.06	
NonBEN-12	0.034	20.21	79.50	2830.39	40.57	1.39	30.89	
NonBEN-13	0.026	27.09	68.70	3603.71	50.84	1.30	41.97	
NonBEN-14	0.011	61.86	55.00	5035.07	105.69	1.18	90.79	
BEN								
mean $\pm$ SD	0.016 $\pm$ 0.006	50.24 $\pm$ 19.12	61.00 $\pm$ 13.65	4891.1 $\pm$ 1921.8	78.95 $\pm$ 15.11	1.25 $\pm$ 0.57	74.76 $\pm$ 25.98	
NON-BEN								
mean $\pm$ SD	0.026 $\pm$ 0.011	33.79 $\pm$ 18.91	77.86 $\pm$ 37.65	4398.3 $\pm$ 2202.8	59.13 $\pm$ 29.27	1.30 $\pm$ 0.50	53.18 $\pm$ 28.21	
ANOVA	F	6.21	4.37	1.81	0.32	3.82	0.05	3.64
	P	<b>0.021</b>	<b>0.048</b>	0.192	0.575	0.063	0.833	0.070
ANCOVA	F	4.99	5.23	2.92	3.86	2.07	0.88	2.08
	P	<b>0.038</b>	<b>0.032</b>	0.107	0.064	0.176	0.309	0.168

$\beta$ : terminal elimination rate constant; AUC: area under the curve from time of dosing extrapolated to infinity; CL/F: apparent clearance; Cmax: maximum concentration; MRT: mean residence time;  $t_{1/2}$ : half-life of elimination; tmax: time of reaching Cmax; Vd/F: apparent volume of distribution.

ANCOVA included age, sex, hemodialysis duration, ferritin, PTH and ACEI use as covariates.

healthy adult males Hayashi et al.<sup>31</sup> detected a significant negative correlation between the elimination rate constant and age and creatinine. As the main organs involved in Epo elimination are the kidneys and bone marrow and both kidney function and bone marrow cellularity decrease with age, the authors suggested that age and creatinine influence

Epo elimination. Although an impact of age on Epo elimination in our patients cannot be fully excluded, neither age nor other covariates that differed between the groups was found affect Epo elimination in the ANCOVA model. On the other hand, residual renal function was maintained longer in BEN patients than in those with other kidney

diseases<sup>34</sup> and our BEN patients were shorter on hemodialysis treatment than non-BEN patients. Therefore, renal clearance of Epo could be higher in BEN than in non-BEN patients. As previous studies showed that the kidneys contribute to Epo elimination in a very minor fashion<sup>35</sup> and residual kidney function in patients more than three years on dialysis is most often negligible, it is not expected that renal elimination of Epo could be of any influence.

## CONCLUSION

Pharmacokinetic analysis of beta-erythropoietin found a significantly longer  $t_{1/2}$  in BEN than in non-BEN patients indicating that treatment with ESA could have different effects in different diseases. These findings need to be confirmed in a well-controlled study with a larger sample size in order to establish population pharmacokinetics of beta-Epo in BEN patients, to evaluate the effects of physiopathological factors on the disposition kinetics of beta-Epo and to find potential predictive factors for dosage individualization.

## Acknowledgments

This work was conducted as a part of projects No 175089 and 175023 funded by the Ministry of Science, Education and Technological Development, Belgrade, Republic of Serbia.

## Conflicts of interest

The authors declare that they have no conflicts of interest related to the contents of this article.

## REFERENCES

- Danilovic V, Djuric M, Mokranjac M, Stojimirovic B, Zivojinovic J, Stojakovic P. Néphrites chroniques provoquées par l'intoxication au plomb par voie digestive (farine). *Presse Méd* 1957;65:2039-40.
- Gaon J. Endemic nephropathy in Bosnia. In: *The Balkan Nephropathy*. Eds. G.E.W. Wolstenholme & J. Knight. Ciba Foundation Study Group No. 30. London: Churchill; 1967. p. 51-71.
- Danilovic V. Endemic nephropathy in Yugoslavia. In: *Endemic (Balkan) Nephropathy, Proc. 4th Symp., Nis 1979*. Eds. S. Strahinjic & V. Stefanovic. Nis: Inst. Neph. Haemod; 1981. p. 1-5.
- Bruckner I, Lazarescu R, Titeica M, Ghirghiescu B, Stroescu F. Der Mechanismus der Anaemie bei der endemische Nephropathie. In: *Int. Symp. on Endemic Nephropathy, Sofia 1963*. Sofia: Bulg. Acad. Sc. Press; 1965. p. 48-51.
- Trnacević S, Halilbasić A, Ferluga D, Plavljanic D, Vizjak A, Duraković H, et al. Renal function, protein excretion and pathology of Balkan endemic nephropathy. I. Renal function. *Kidney Int Suppl* 1991;34:S49-S51.
- Pavlovic-Kentera V, Djukanovic Lj., Clemons GK, Trbojevic S, Dimkovic N, Slavkovic A. Anaemia in Balkan endemic nephropathy. *Kidney Int Suppl* 1991;34:S46-S48.
- Pavlovic-Kentera V, Clemons GK, Trbojevic S, Dimkovic N, Djukanovic Lj. Erythropoietin and anemia in the progression of Balkan endemic nephropathy and other renal diseases. *Nephron* 1990;54:139-43.
- Lukić Lj, Mitrović Dj, Kovačević S, Stanišić M, Pelemiš S, Tešić J, et al. Higher dose of erythropoietin for anemia correction in Balkan endemic nephropathy patients. *Srp arh cel lek* 2012;140:456-61.
- Macdougall IC, Gray SJ, Elston O, Breen C, Jenkins B, Browne J, et al. Pharmacokinetics of novel erythropoiesis stimulating protein compared with epoetin alfa in dialysis patients. *J Am Soc Nephrol* 1999;10:2392-5.
- Macdougall IC, Robson R, Opatrna S, Liogier X, Pannier A, Jordan P, et al. Pharmacokinetics and pharmacodynamics of intravenous and subcutaneous continuous erythropoietin receptor activator (C.E.R.A.) in patients with chronic kidney disease. *Clin J Am Soc Nephrol* 2006;1:1211-5.
- Pérez-Oliva JF, Casanova-González M, García-García I, Porrero-Martín PJ, Valenzuela-Silva CM, Hernández-Montero T, et al.; Bioequivalence Study of Erythropoietin Group. Comparison of two recombinant erythropoietin formulations in patients with anemia due to end-stage renal disease on hemodialysis: a parallel, randomized, double blind study. *BMC Nephrol* 2005;6:5
- Togawa A, Tanaka T, Nagashima S, Keta H, Kobayashi Y, Nishikawa Y, et al. A comparison of the bioequivalence of two formulations of epoetin alfa after subcutaneous injection. *Br J Clin Pharmacol* 2004;58:269-76.
- Jensen JD, Jensen LW, Madsen JK. The pharmacokinetics of recombinant human erythropoietin after subcutaneous injection at different sites. *Eur J Clin Pharmacol* 1994;46:333-7.
- Woo S, Krzyzanski W, Duliege AM, Stead RB, Jusko WJ. Population pharmacokinetics and pharmacodynamics of peptidic erythropoiesis receptor agonist (ERA) in healthy volunteers. *J Clin Pharmacol* 2008;48:43-52.
- Chanu P, Gieschke R, Charoin J-E, Pannier A, Reigner B. Population pharmacokinetic/pharmacodynamic model for C.E.R.A. in both ESA-naïve and ESA-treated chronic kidney disease patients with renal anemia. *J Clin Pharmacol* 2010;50:507-20.
- Kawakami K, Takama H, Nakashima D, Tanaka H, Uchida E, Akizawa T. Population pharmacokinetics of darbepoetin alfa in peritoneal dialysis and non-dialysis patients with chronic kidney disease after single subcutaneous administration. *Eur J Clin Pharmacol* 2009;65:169-78.
- Locatelli F, Aljama P, Bárány P, Canaud B, Carrera F, Eckardt KU, et al. European best practice guidelines working group: revised European best practice guidelines for the management of anaemia in patients with chronic renal failure. *Nephrol Dial Transplant* 2004;19 Suppl 2:ii1-ii47.
- Rosser J, Gassmann-Mayer C, Frei D, McClellan W. Prevalence and predictors of epoetin hyporesponsiveness in chronic kidney disease patients. *Nephrol Dial Transplant* 2007;22:794-800.
- de Francisco ALM, Stenvinkel P, Vaulont S. Inflammation and its impact on anaemia in chronic kidney disease: from haemoglobin variability to hyporesponsiveness. *NDT Plus* 2009;2 Suppl 1:i18-i26.



20. Bradbury BD, Critchlow CW, Weir MR, Stewart R, Krishnan M, Hakim RH. Impact of elevated C-reactive protein levels on erythropoiesis stimulating agent (ESA) dose and responsiveness in hemodialysis patients. *Nephrol Dial Transplant* 2009;24:919-25.
21. Solomon SD, Uno H, Lewis EF, Eckardt KU, Lin J, Burdman EA, et al.; Trial to Reduce Cardiovascular Events with Aranesp Therapy (TREAT) Investigators. Erythropoietic response and outcomes in kidney disease and type 2 diabetes. *N Engl J Med* 2010;363:1146-55.
22. Guerrero-Riscos MÁ, Montes-Delgado R, Seda-Guzmán M, Praena-Fernández JM. Erythropoietin resistance and survival in non-dialysis patients with stage 4-5 chronic kidney disease and heart disease. *Nefrologia* 2012;32(3):343-52.
23. Jensen JD, Madsen JK, Jensen LW, Pedersen EB. Reduced production, absorption, and elimination of erythropoietin in uremia compared with healthy volunteers. *J Am Soc Nephrol* 1994;5:177-85.
24. McGowan T, Vaccaro NM, Beaver JS, Massarella J, Wolfson M. Pharmacokinetic and pharmacodynamic profiles of extended dosing of epoetin alfa in anemic patients who have chronic kidney disease and are not on dialysis. *Clin J Am Soc Nephrol* 2008;3:1006-14.
25. Salmonson T, Danielson BG, Wikstrom B. The pharmacokinetics of recombinant human erythropoietin after intravenous and subcutaneous administration to healthy subjects. *Br J Clin Pharmacol* 1990;29:709-13.
26. Jelkmann W. The enigma of the metabolic fate of circulating erythropoietin (Epo) in view of the pharmacokinetics of the recombinant drugs rhEpo and NESP. *Eur J Haematol* 2002;69:265-74.
27. Elliott S, Pham E, Macdougall IC. Erythropoietins: a common mechanism of action. *Exp Hematol* 2008;36:1573-84.
28. Gross AW, Lodish HF. Cellular trafficking and degradation of erythropoietin and novel erythropoiesis stimulating protein (NESP). *J Biol Chem* 2006;281:2024-32.
29. Agoram B, Aoki K, Doshi S, Gegg C, Jang G, Molineux G, et al. Investigation of the effects of altered receptor binding activity on the clearance of erythropoiesis-stimulating proteins: Nonerythropoietin receptor-mediated pathways may play a major role. *J Pharm Sci* 2009;98:2198-211.
30. Bukvic D, Jankovic S, Maric I, Stosovic M, Arsenovic A, Djukanovic L. Today Balkan endemic nephropathy is a disease of the elderly with a good prognosis. *Clin Nephrol* 2009;72:105-13.
31. Hayashi N, Kinoshita H, Yukawa E, Higuchi S. Pharmacokinetic analysis of subcutaneous erythropoietin administration with nonlinear mixed effect model including endogenous production. *Br J Clin Pharmacol* 1998;46:11-9.
32. Chakraborty A, Natarajan J, Guilfoyle M, Morgan N, Vercammen E, Cheung W. Population pharmacokinetics of erythropoietin in critically ill subjects. *J Clin Pharmacol* 2005;45:193-202.
33. Agoram B, Sutjandra L, Sullivan JT. Population pharmacokinetics of darbepoetin alfa in healthy subjects. *Br J Clin Pharmacol* 2007;63:41-52.
34. Djukanovic Lj, Radovanovic Z. Balkan nephropathy. In: De Broe ME, Porter GA, (eds). *Clinical Nephrotoxins. Renal Injury from Drugs and Chemicals*, third edition. New York: Springer; 2008. p. 843-58.
35. Yoon WH, Park SJ, Kim IC, Lee MG. Pharmacokinetics of recombinant human in rabbits and 3/4 nephrectomized rats. *Res Commun Mol Pathol Pharmacol* 1997;96:227-40.